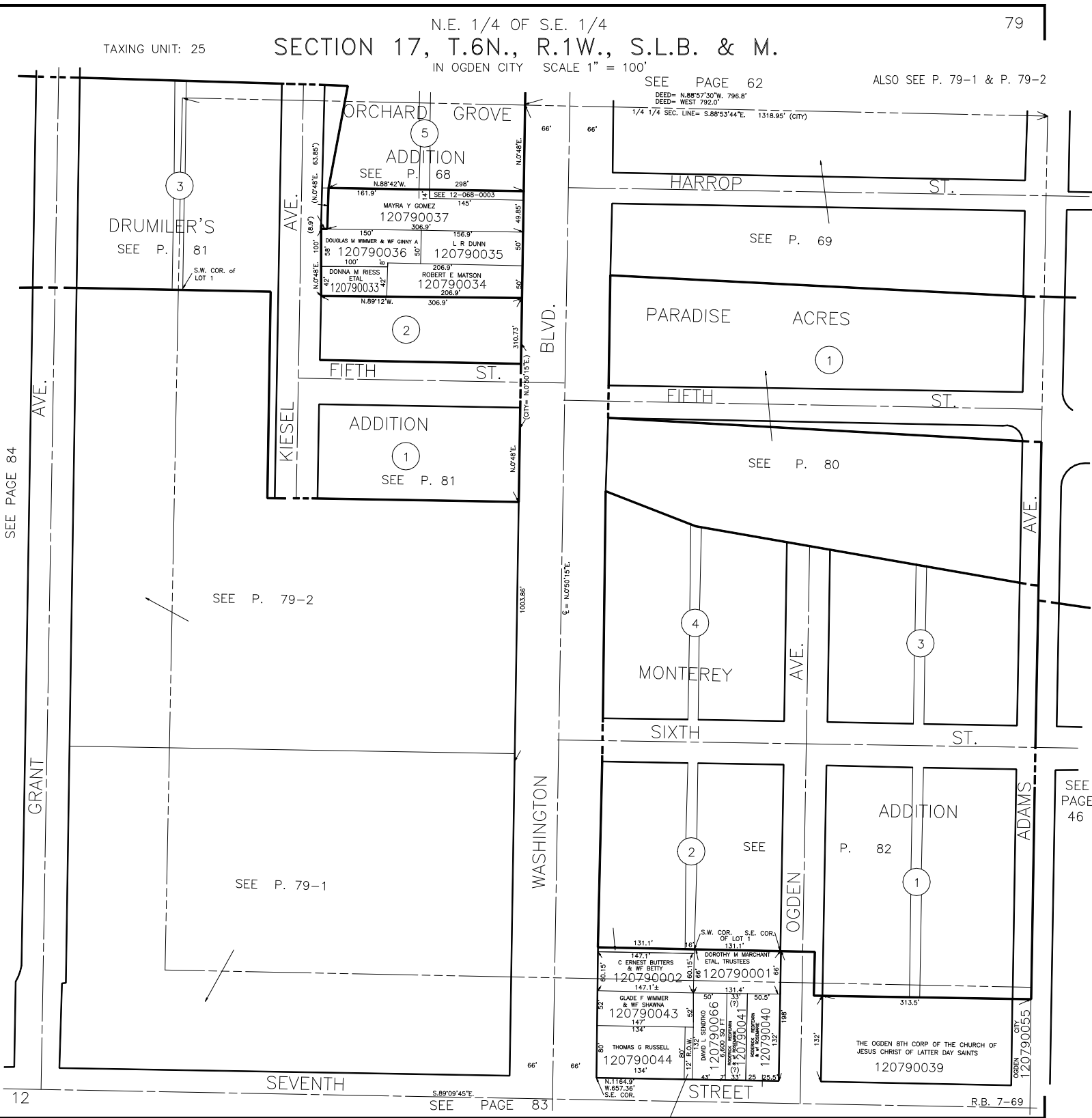


TAXING UNIT: 25

N.E. 1/4 OF S.E. 1/4  
SECTION 17, T.6N., R.1W., S.L.B. & M.  
IN OGDEN CITY SCALE 1" = 100'

SEE PAGE 62

ALSO SEE P. 79-1 & P. 79-2



SEE PAGE 84

12

SEE PAGE 83

SEE PAGE 46

(C CHARLES BELL & WF MARGARET W)  
120790042  
1040 SQ FT